



Gulls Way

8a Buzza Street, St Mary's,
TR21 0HX



Sleeps 2 | Wednesday Change over

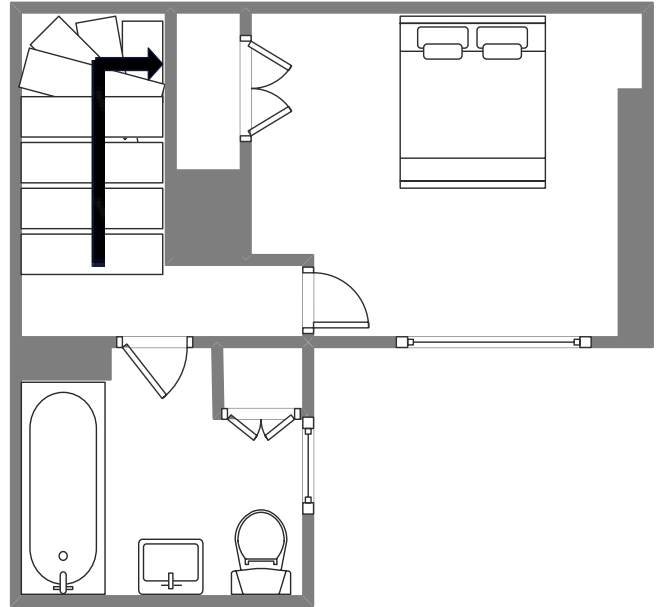
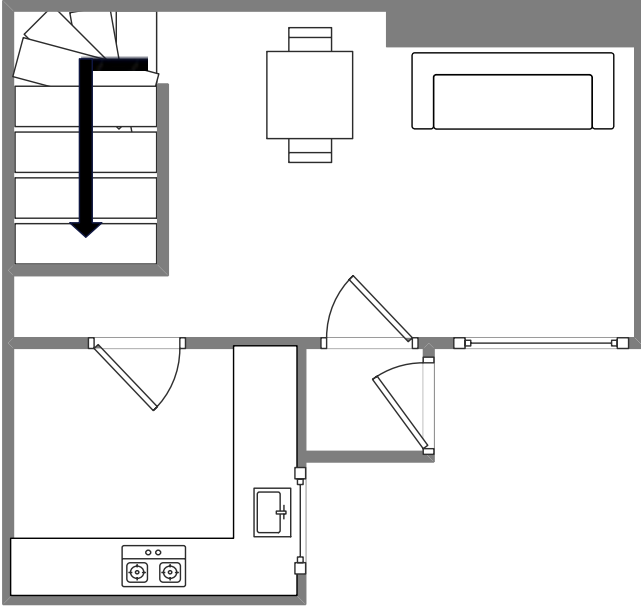
- Double Arrangement
- Internet Access
- Laundry Facility
- Convenient location for beaches and Quay

A comfortable well appointed Maisonette, set in a quiet location just a short walk from the centre of Hugh Town and less than 50 metres from Porthcressa Beach.

The accommodation is set over two floors. On the ground floor is the kitchen, lounge/dining room. A double bedroom is located on the first floor along with the bathroom which has an electric shower over a full size bath.

A small courtyard at the front allows space for clothes drying. There is a washing machine in an annex in the courtyard.

Layout



Getting to the property

Map of St Marys



Directions from the Quay | Walking time: 7-9 minutes

Head towards the entrance to the quay
Turn left at The Mermaid Inn on to Hugh Street
Keep to the right side of the road past Hugh Street
Cafe on to Silver Street.
Go past Town Hall and Porthcressa Car Park on to

Porthcressa Street.
at the junction near the end of Porthcressa street turn right.
There will be blue entrance door by your left (8b, at the back
of Buzza Street).
Enter this door and hear straight through.

What3words///wizards.meant.unlisted